



Interacting with the LGBT Community

# Interacting with the LGBT Community

- How do we react when we see a couple together?
- What do we think?
- Are we welcoming and inclusive?
- Are there any limitations to our conversation or our manner?
- **What 'filter' do we apply?**



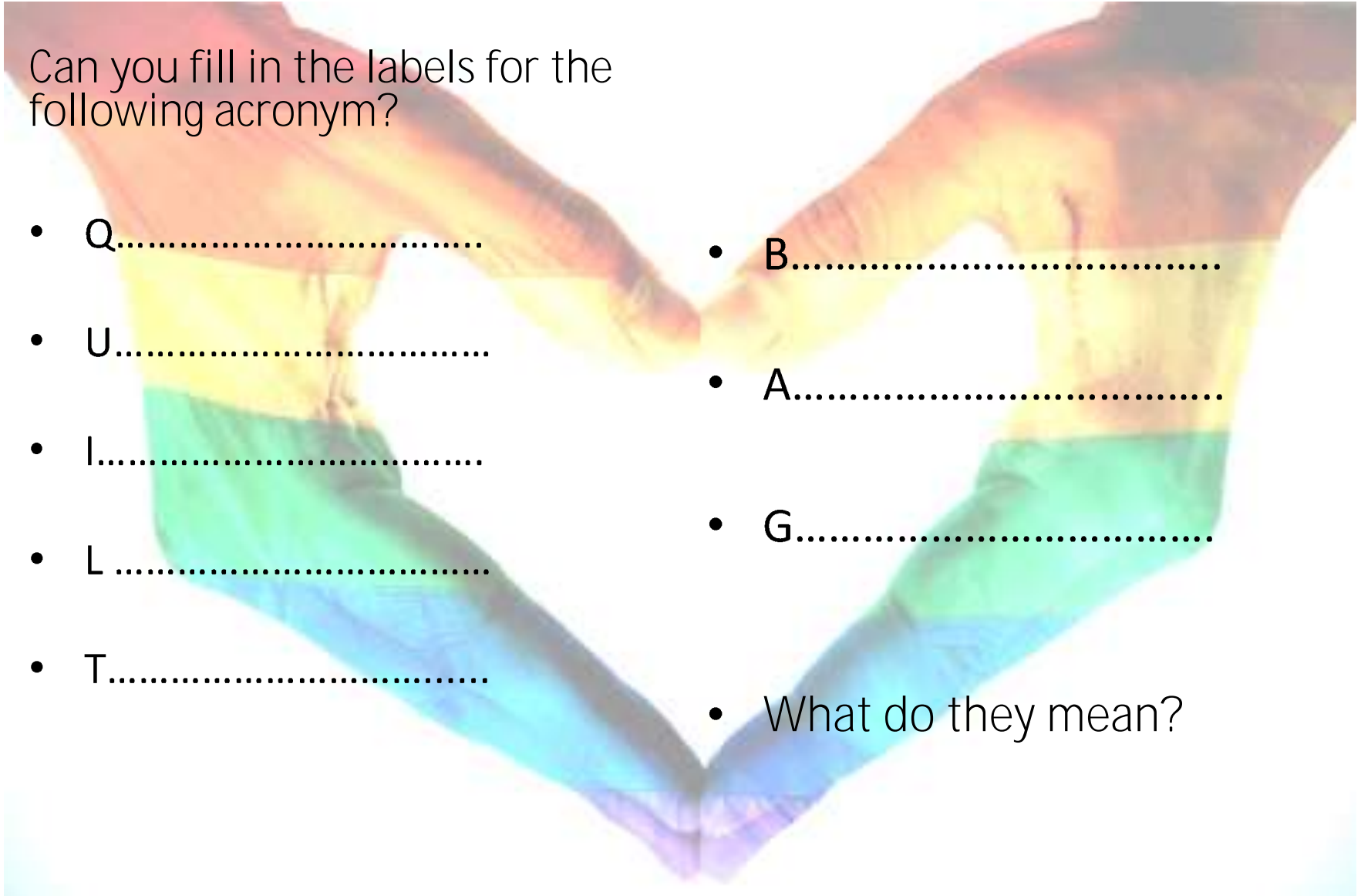
# Interacting with the LGBT Community

- What labels are used in society?
- **We normally use male or female or ‘normal’** but this is based upon living ‘in our heteronormative society’
- If the heterosexual population makes up 95% **of the population, it may be ‘natural’ to say that the majority are ‘normal’ – but is it?**

# LGBT Community Label QUIZ

Can you fill in the labels for the following acronym?

- Q.....
- U.....
- l.....
- L.....
- T.....
- B.....
- A.....
- G.....
- What do they mean?



# LGBT Community Label QUIZ

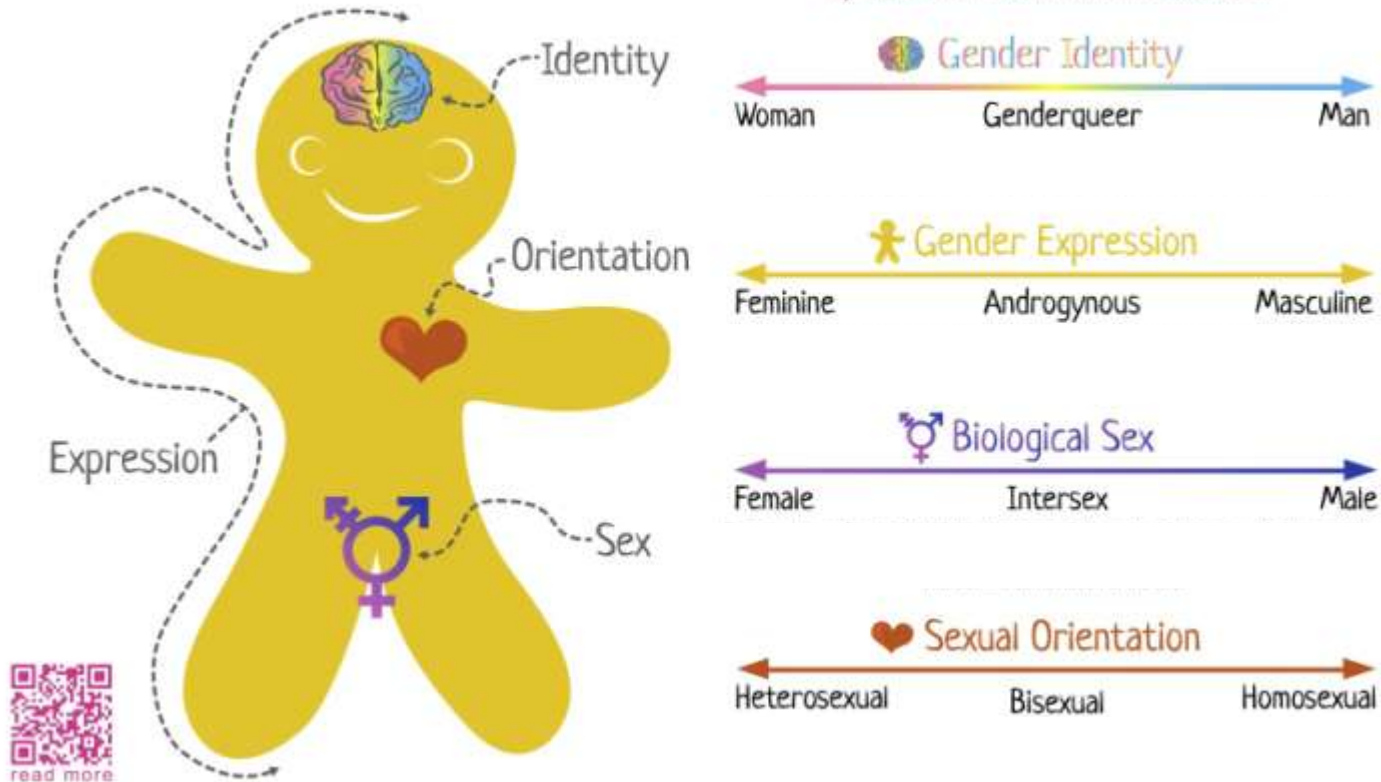
Can you fill in the labels for the following acronym?

- Queer or Qustioning
- Undecided
- Intersex
- Lesbian
- Transgender
- Bisexual.
- Asexual
- Gay
- What do they mean?

# Gender Sexuality

## The Genderbread Person

by [www.ItsPronouncedMetrosexual.com](http://www.ItsPronouncedMetrosexual.com)



Key Point: It's a spectrum & not just Male and Female

# Transgender

- Very much in the news recently
- People whose gender **doesn't correspond with** the biological sex assigned at birth.
- Do we give them respect for this?
- Can we empathise with them?

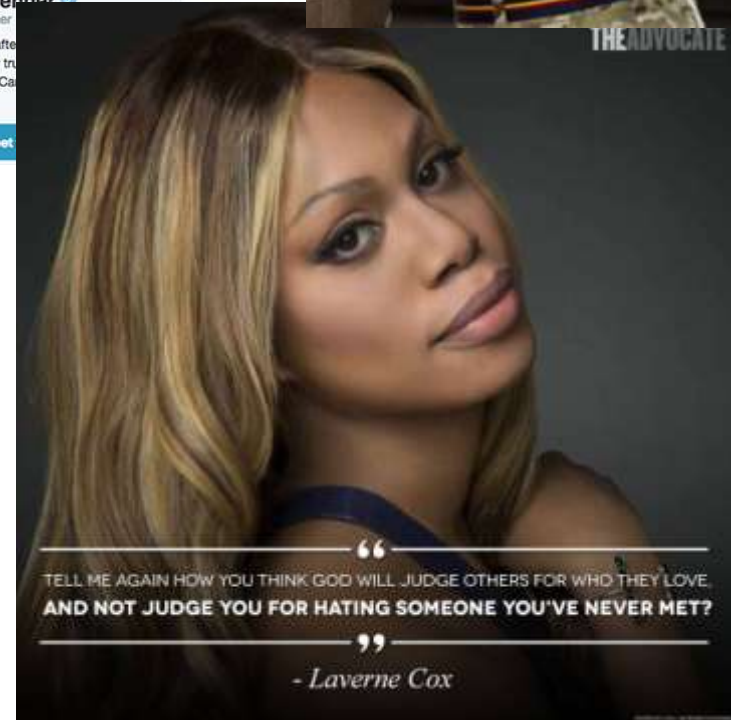


Caitlyn Jenner

@Caitlyn\_Jenner

I'm so happy after to be living my true world Caitlyn. Can you know her/me.

Tweet



Personal Pronouns

Best solution is to  
ask:

What pronoun  
would you like me  
to use?





# Why are some people LGBT? Is it a lifestyle choice?



# Where are we?

- How did we come from being fundamentalists to LGBT activists, and still Christian?



# Theology

- [Homosexuality and the Bible](#)
- [The 6 verses about homosexuality in the Bible](#)
- [LGBT Theology](#) – Vicky Beeching
- [Comparing beliefs about homosexuality among conservative Christians, liberal Christians and many others.](#)
- [Steve Chalke on Premier Christianity](#)
- [The Clobber Verses](#)

# Signposts

- Where are your nearest LGBT centres?
  - The LGBT individual will probably know how to contact them but what if you need more information?
  - <http://lgbt.foundation/get-support/>
- [Mermaids\\_Gender](#) – supporting Transgender
- [Gires](#) – supporting Transgender
- [FFLAG](#) – supporting parents of LGBT
- [Diverse Church](#) – across the UK 18-30s
- [Stonewall](#)

# LGBT Churches within 200 miles of Manchester and in UK



[http://www.gaychurch.org/find\\_a\\_church/](http://www.gaychurch.org/find_a_church/)

<http://inclusive-church.org.uk/directory>

# Who else is out there?

- Jessica White and Manchester's Village Angels
- Looking to share best practice with the Street Angels and Street Pastors



# Interacting with the LGBT Community

- **We've looked at the acronyms/labels** associated with LGBT
- We have looked at the pronouns you should use with Transgender people
- We have heard that others like the Village Angels undertake the same role as us

# Interacting with the LGBT Community

- Our response to the LGBT community should be as with any other person we meet on the streets.
- The Church is still considered by some to be **'negative towards the LGBT community'**.
- You now have the signposts to relevant agencies to help you.
- **What's your reaction now to LGBT individuals?**



So let's all continue to be a candle,  
a light to the world! Thank you



# Questions